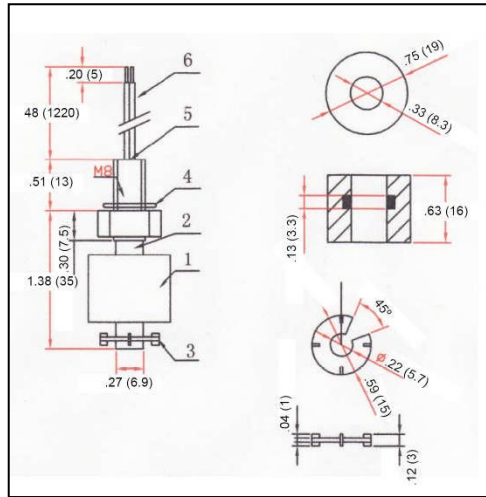


Float Switch



- Versatile, economical and compact.
 - UL Listed internal reed switch.
 - Normally closed; float can be removed, inverted and replaced for normally open operation.
 - M8 stem threading
- Unit: Inches (mm)

Materials:

1. Float: Polypropylene Foam
2. Stem: POM
3. Nut: Polypropylene
4. O-ring: Silicon
5. Clip: POM
6. Leads: 1007 AWG22, 48", black
7. Top Fill: Epoxy

Specifications:

Temperature: -10 ~ +90°C
Contact rating: 50W
Max Switching Voltage: <=220VAC
Min Breakdown Voltage: 600VDC
Max Switching Current: 2.5A
Max Contact Resistance: 100mΩ
Specific Gravity: .8

Operation: When the float drops to within .12" (+/- .04") of the bottom clip, the internal reed contacts, draw together and complete a circuit. When the float rises .20" (+/- .04") from the bottom clip, the contacts separate and open the circuit.